



MISSISSAUGA RD STATION
BUS AND PARKING ACCESS ROAD

TOTAL AREA 6.76 ha

HEREFORD STREET

MISSISSAUGA
ROAD STATION

PARKING AREA (1.31 ha)
APPROX. 501 PARKING SPACES

BUS LOOP

4 BUS BAYS

POND 0.92 ha
(EDGE OF POND 188.80m)

PARKING AREA (0.23) ha
18 ACCESSIBLE PARKING
AND 9 PPUDO SPACES

WESTBOUND

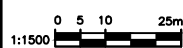
407 ETR

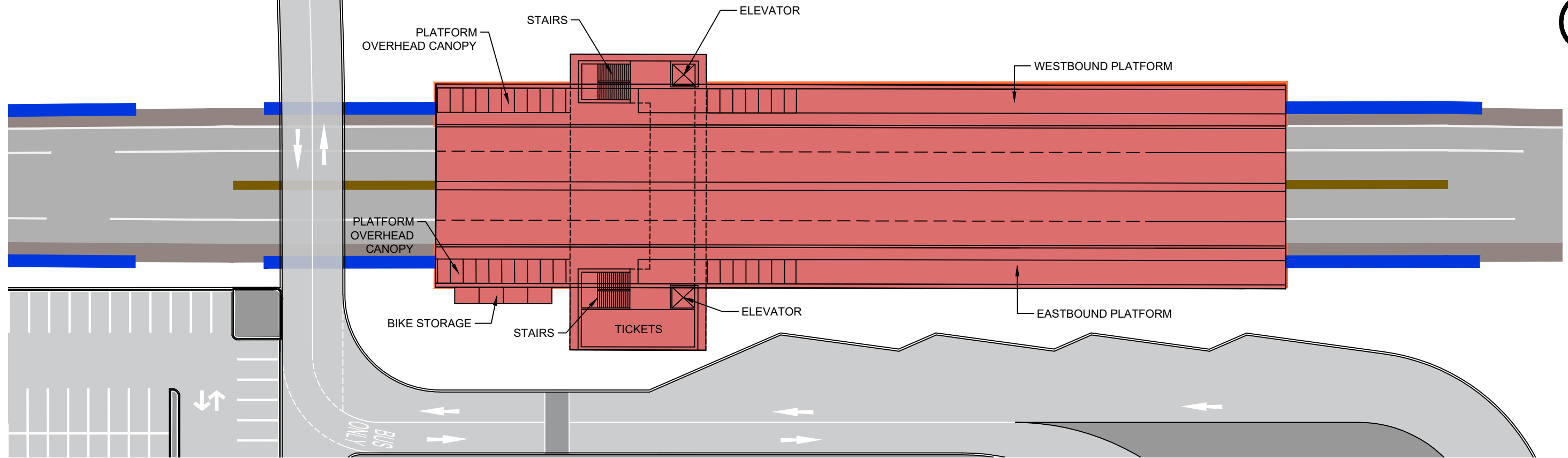
EASTBOUND

N-W RAMP

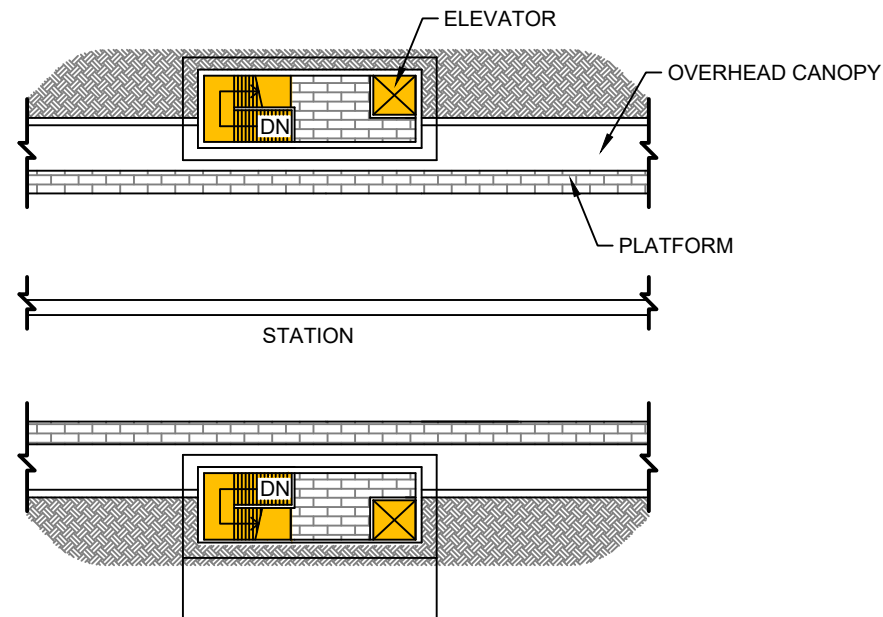
MISSISSAUGA ROAD

REGULAR PARKING = 301 SPACES
ACCESSIBLE PARKING = 18 SPACES
CARPOOL PARKING = 200 SPACES
PPUDO = 9 SPACES

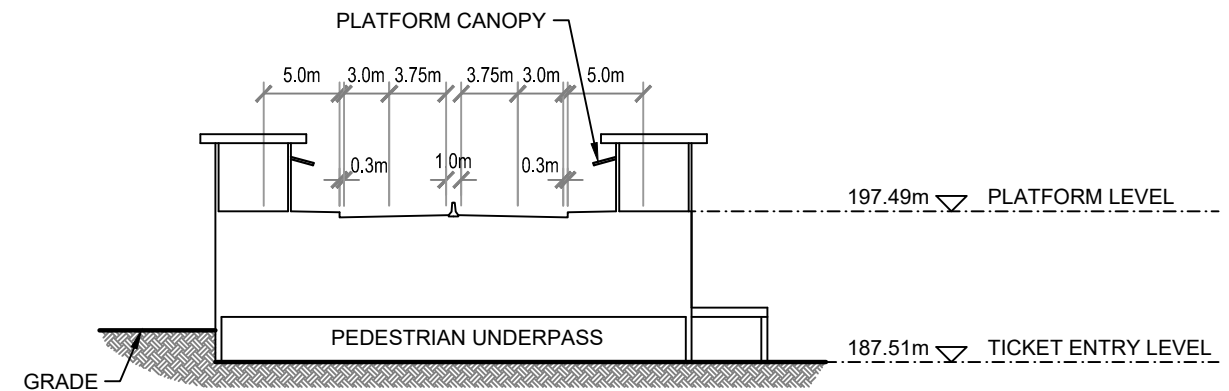




GROUND FLOOR PLAN
Scale 1:500



PLATFORM LEVEL PLAN
Scale 1:500



SECTION A-A
Scale 1:500

DRAWING NAME: J:\TOR\7294 ON-MTO 407 TRANSITWAY WCTO BRANTTTT'S General\03 - Drawing\07 - Stations\Station layouts\407 TW4 - Mississauga Rd Station.dwg
CREATED: RM3
MODIFIED: Dec 09, 2019 3:41pm

LEGEND

